



Installation instructions of 4 3/10 type female connector for 7/8" foam dielectric feeder cable

43F-LCF78-CP01

ITEM: 2161267.1

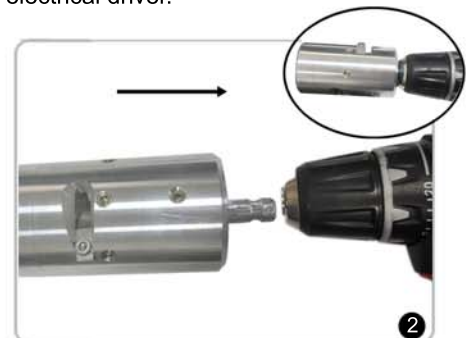
Please read the instructions carefully before assembly.

Tools and Material:

Trimming tool (base with separable front end), compression gun, power drill, shaping tool, electrical driver.



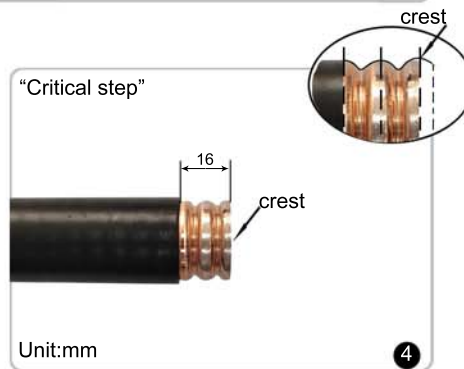
Assembly tools (required).



Attach the trimming tool to power drill.



Insert the cable into the trimming tool. Select the low speed on the drill or 400~600 RPM on a variable speed drill. Trim the cable.



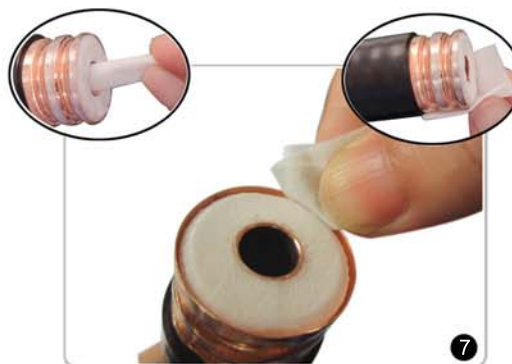
Unit:mm



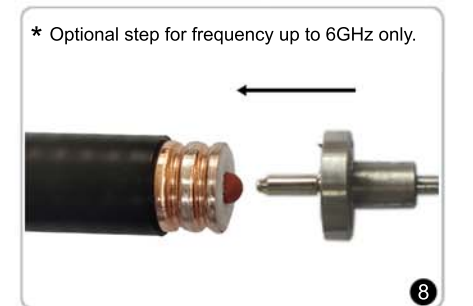
Use BXD07-6 to reshape the outer corrugation. Make sure to put the two shaping teeth inside the corrugation and then rotate until the outer corrugation is round enough with no dent or deformation and create visible clearance between outer corrugation and inner insulator.



Clean off the debris left after the stripping with vacuum cleaner.



Open up the alcohol pad to clean the inner side of center conductor, the insulator and outer corrugation carefully as per picture shown.

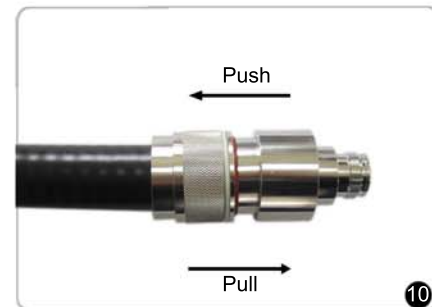


* Optional step for frequency up to 6GHz only.

Use the shaping tool to insert the sealed ball into the inner conductor. The ball is below the inner conductor more than 20mm.



Put on the connector.



Push the connector onto the cable. Then pull the connector to make sure the connector can not be pulled off.



Put the connector into the compressing frame and make sure connector being sitted steadily.





Installation instructions of 4.3/10 type female connector for 7/8" foam dielectric feeder cable

43F-LCF78-CP01

ITEM: 2161267.1



Press the trigger on the compression gun until it cycles and you hear a "pop". Do not pull or push on compression gun during compression.



Finished.

